

Acknowledgements

Many thanks to the following for help with this leaflet:

- Dr Janice Fuller (Consultant Ecologist)
- Angela Quinn (Galway County Council)
- An Gáirdín Organic and Ecology Centre
- Teachers and pupils from St. Brendan's National School
- Portumna Tidy Towns
- John Conaghan
- Jim Hynes
- Tom Cuffe

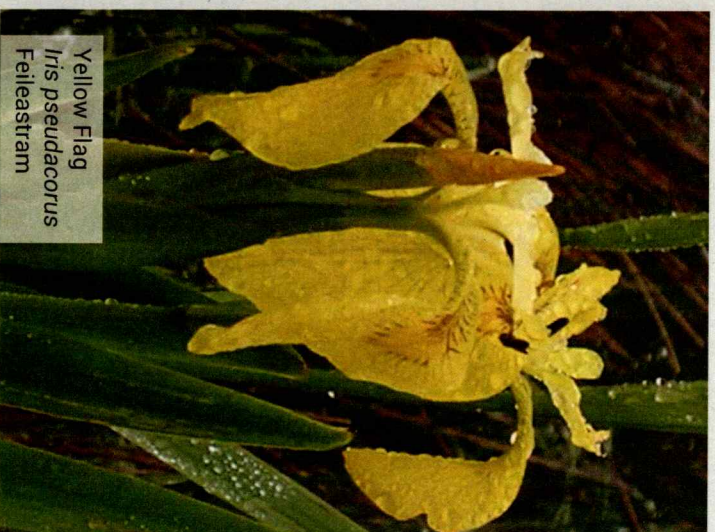
Text and photos provided by Dr Janice Fuller (Consultant Ecologist) unless otherwise credited. Photographs by Tom Cuffe are subject to copyright.

Local Agenda 21 Environment Partnership funding from Galway County Council is gratefully acknowledged.

More info at

www.visitportumna.com

www.angairdin.com



Yellow Flag
Iris pseudacorus
Felleastram

*What would the world be, once bereft
Of wet and of wildness? Let them be left,
O let them be left, wildness and wet;
Long live the weeds and the wilderness yet.*

Gerard Manley Hopkins

Cherish and protect our Wetlands

Look out for
World Wetlands Day
held each year on 2nd February

This brochure is printed on
recycled paper



Wetlands of Portumna



Discover
your
Wetlands

Nature in Portumna
Series No.2



©2018 Tom Cuffe



Common Darter
Sympetrum striolatum
Sciobaire Coiteann

©2018 Tom Cuffe



Azure Damselfly
Coenagrion puella
Goirmin Spéiríúil



Blue-tailed Damselfly
Ischnura elegans
Rimnghorn Coiteann



Four-spotted Chaser
Libellula quadrimaculata
Ruagaire Ceathairbhallaigh

Banded Demoiselle
Calopteryx splendens
Brideog Bhandach



©2018 Tom Cuffe



Reddish Amber Snail
Oxyloma sarsii

©2018 Tom Cuffe



Brown-lipped Snail
Cepaea nemoralis

©2018 Tom Cuffe

Wetlands of Portumna

The town of Portumna is situated at the northern end of Lough Derg where the River Shannon flows into the lake. The town has a fascinating history and heritage largely due to its strategic location on the Shannon system, which has been an important water highway for millennia.

Much of the shoreline in and around Portumna is fringed by a variety of wetlands including reed swamps, fens, callow grasslands and wet woodlands. These watery habitats greatly enhance the local land and waterscapes with their range of colour, texture and movement.

The benefits of Wetlands

Wetlands are havens for wildlife because they provide cover and shelter as well as food. Wetlands are teeming with invertebrates in the summer including damselflies, dragonflies, mayflies, snails, beetles and other bugs. They provide a rich source of food for birds, fish and small mammals.

Wetlands are also hugely important for maintaining the water quality of the lake. They act like filters intercepting nutrients and sediments in run-off from the surrounding landscapes. In addition, they provide natural flood control as they hold a lot of water and release it slowly.



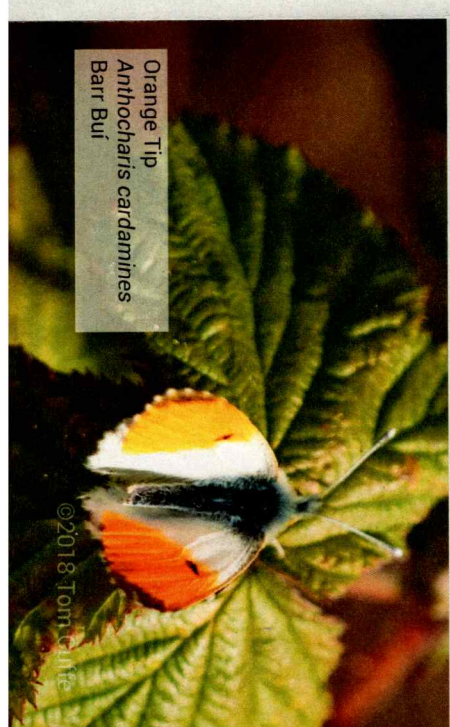
Common Frog
Rana temporaria
Loscán

©2018 Tom Cuffe



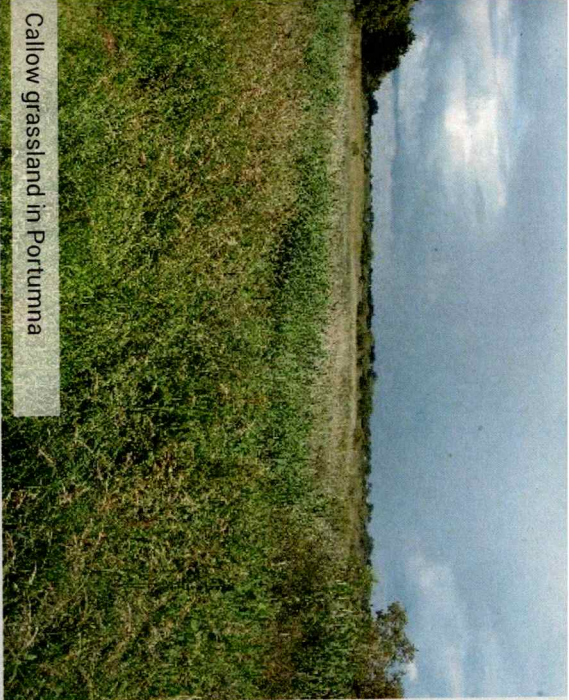
Brimstone
Gonepteryx rhamni
Buióg Ruibheach

©2018 Tom Cuffe

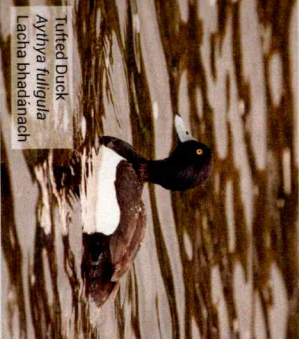


Orange Tip
Anthocharis cardamines
Barr Bui

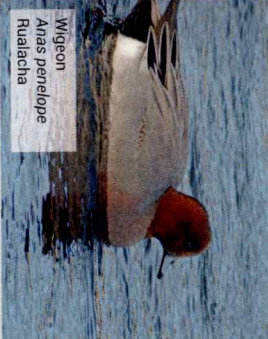
©2018 Tom Cuffe



Callow grassland in Portumna



Tufted Duck
Aythya fuligula
Lacúla bhíadainach



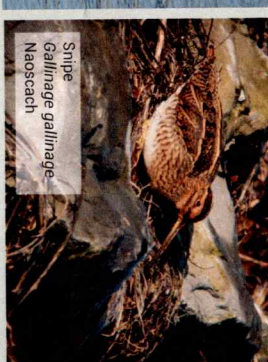
Wigeon
Anas penelope
Ruailacha



Common Tern
Sterna hirundo
Gerbhínóg



Great Crested Grebe
Podiceps cristatus
Foilteach mór



Snipe
Gallinago gallinago
Neoscach



Common Tern
Sterna hirundo
Gerbhínóg



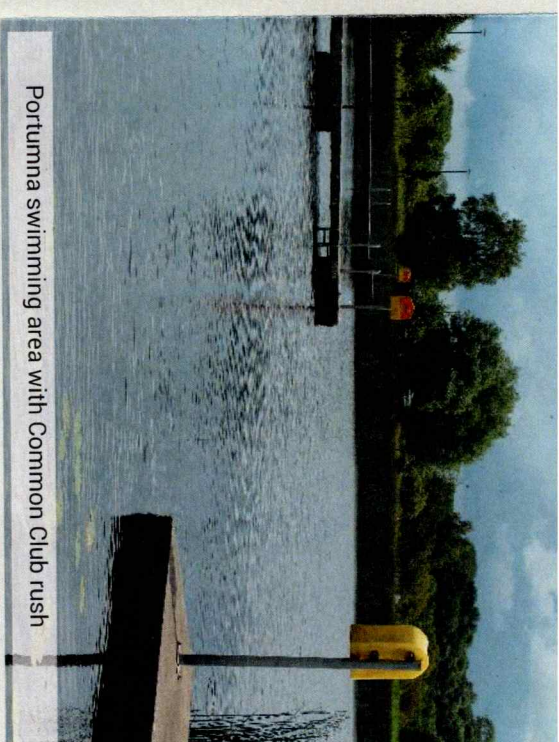
Marsh Fritillary
Eurodryas aurinia
Frititeán Réisc

Variety of Wetlands

Reed swamp fringes much of the lake shore dominated by Common Reed or Common Club Rush. Other plants that grow in these very wet areas include Yellow Water Lily, Water Mint and Water Plantain. Starling murmurations are an amazing spectacle that can be regularly seen in early winter in and around Portumna. Many flocks of Starlings gather from far and wide to form one swooping mass of birds that perform an awe-inspiring aerial display before roosting in the reed swamp near Portumna for the night.

Fens are a type of peatland often found near lake edges and there are some areas of fen along the Portumna shore, particularly in Portumna Forest Park, which is managed by Coillte. These fens are dominated by a variety of sedges, rushes and grasses (e.g. Great Fen Sedge, Bottle Sedge, Black Bog Rush and Purple Moor Grass) and flowers (Meadow Sweet, Purple Loosestrife and Wild Angelica).

Callows are another type of wetland found in Lough Derg, mainly along the River Shannon as it enters the lake in Portumna. Callows are a



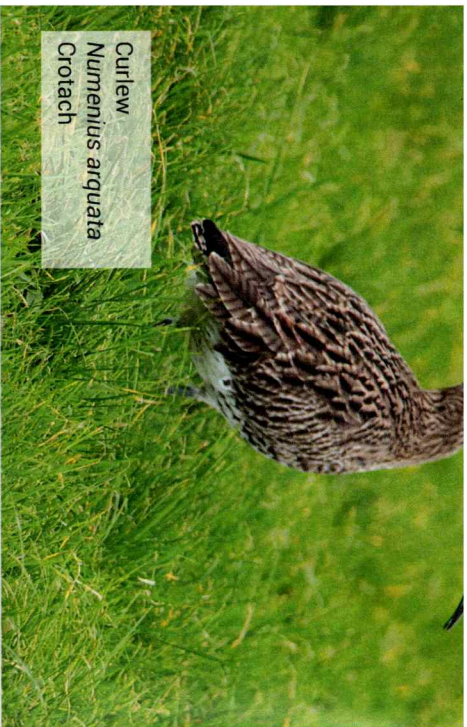
Portumna swimming area with Common Club rush



Common Reed Swamp



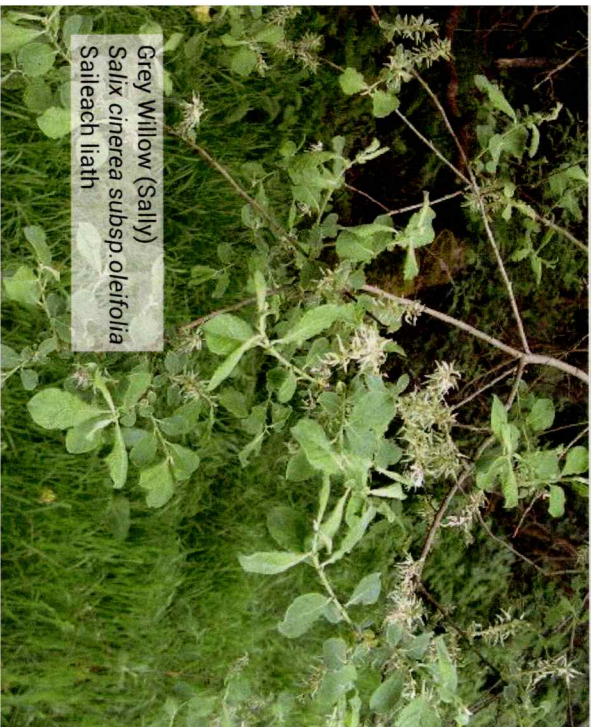
Common Club Rush



Curlew
Numenius arquata
Crotach



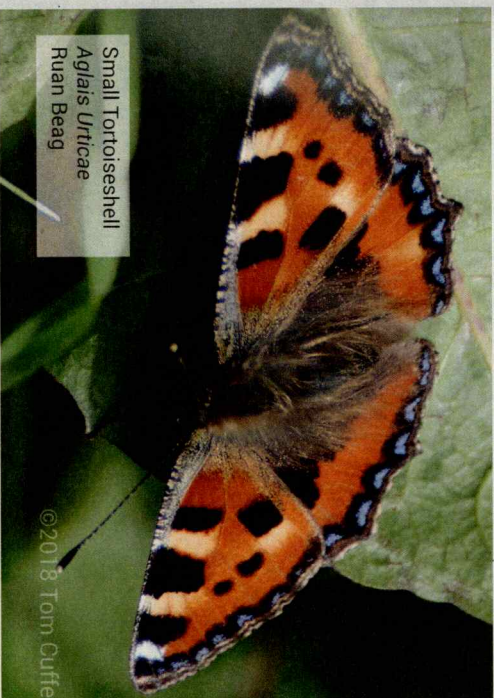
Cormorant with Common Reed in the background



Grey Willow (Sally)
Salix cinerea subsp. *oleifolia*
Saileach liath

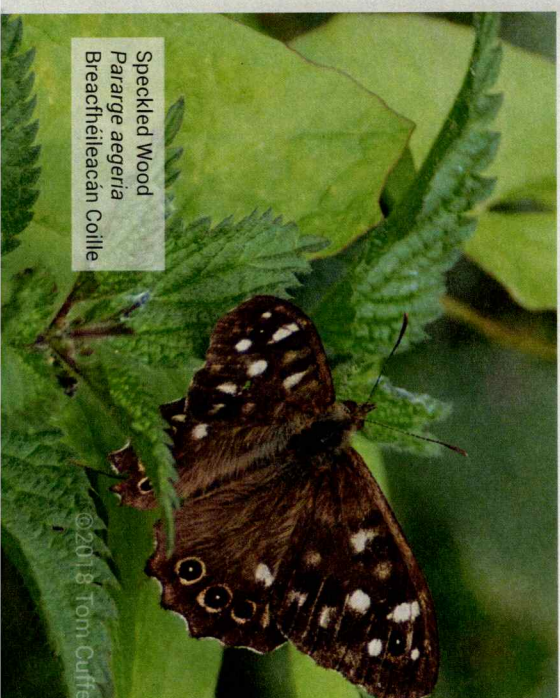
as meadows and can be particularly species-rich with a variety of flowers including Yellow Loosestrife, Angelica and Ragged Robin as well as the grasses, Reed Canary and Common Reed. The rare and beautiful Marsh Pea grows in callow grasslands in Portunna.

Wet woodlands are dominated by trees and shrubs that don't mind having their roots in water all year round, Willow (Sally) and Alder. Flowers such as Yellow Flag Iris, Meadowsweet and Angelica also grow in these watery woodlands.



Small Tortoiseshell
Aglais urticae
Ruan Beag

©2018 Tom Cuffe

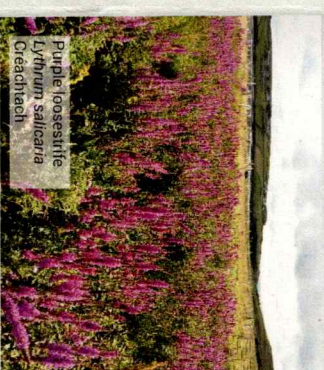


Speckled Wood
Pararge aegeria
Breachtéileacán Coille

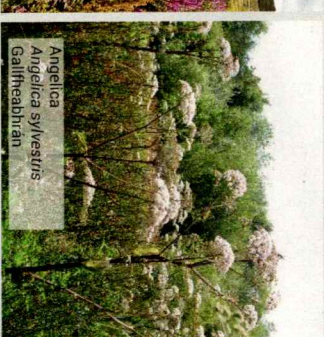
©2018 Tom Cuffe



Starling murmuration near Portunna



Purple loosestrife
Lythrum salicaria
Creachlaich



Angelica
Angelica sylvestris
Galitheabhrán



Marsh Pea
Lathyrus palustris
Peasairín corraigh